

# 1061 ROUTER <sup>10E</sup>



> THE TELINDUS 1061 ROUTER IS A HIGH-SPEED ROUTER FOR ACCESS TO A WAN AT RATES UP TO 155 MBPS WITH A VERY COMPETITIVE PRICE / PERFORMANCE RATIO.

The unit features two independent on-board 100Base-T LAN interfaces, and an interface slot accepting various TIMs (Telindus Interface Modules) with support for PPP, Frame-Relay or ATM. These interfaces include

- > Multiple E1 (up to 8) with support for IMA (Inverse Multiplexing over ATM), multilink PPP or multilink Frame-Relay
- > E3 with support for ATM
- > STM1 with support for ATM
- > 10/100base-T Ethernet interface with built-in 4 port switch

Fully supported by the TDRE (Telindus Dynamic Routing Engine), the unit supports advanced features such as IP Quality of Service and extended support for VLANs. With a routing performance of approximately 150.000 pps, the 1061 Router is capable to handle any type of multimedia or delay-sensitive traffic. Together with the wide choice of high-speed WAN interfaces, this makes the Telindus 1061 Router the ideal access device for

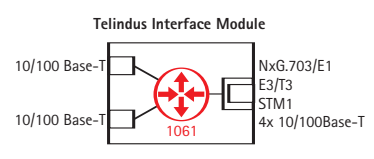
connecting large business users, offering secured managed IP services at the highest possible speeds.

Other typical applications include point-to-point multi-link E1 IP connections, concentration of remote E1 routers, and high-speed routed connectivity over dark fibre.

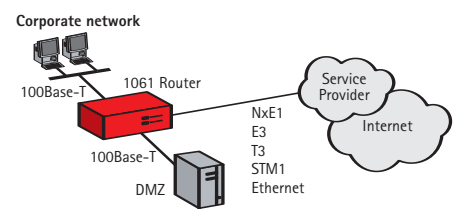
The Telindus 1061 Router comes in a very compact size (1 unit high) and is rack mountable. It fits in 30 cm deep ETSI racks with all connectors and indicators on the front. Combined with its low power consumption it is easily stackable.

The equipment supports different management interfaces on different levels of the network.

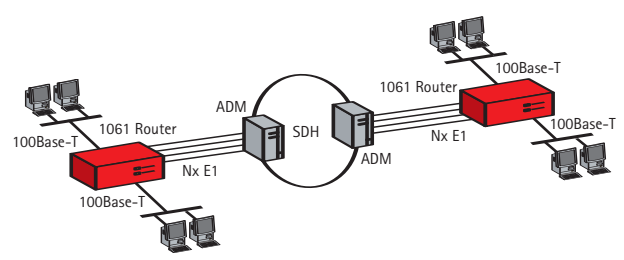
TELINDUS 1061 ROUTER SCHEMATIC REPRESENTATION



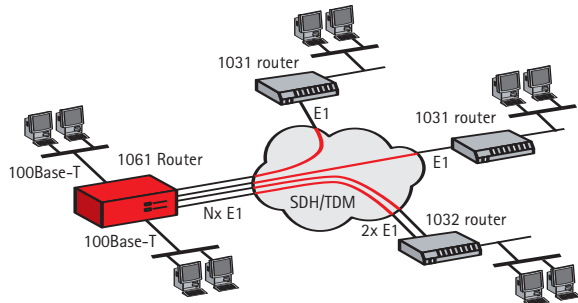
CORPORATE NETWORK CONNECTIVITY



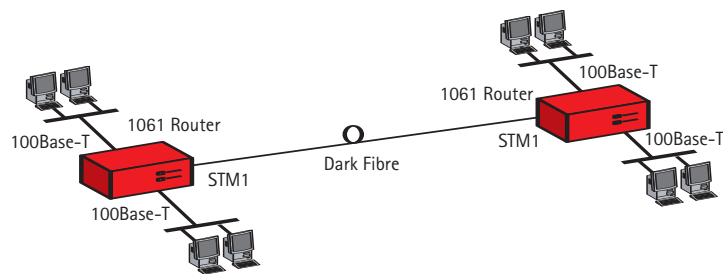
POINT-TO-POINT MULTI-LINK E1 IP CONNECTIONS OVER SDH



V CONCENTRATION OF REMOTE E1 ROUTERS



V HIGH-SPEED ROUTED CONNECTIVITY OVER DARK FIBRE



## FEATURES & BENEFITS

- > HIGH PERFORMANCE ACCESS ROUTER WITH STM1 CAPACITY
- > MODULAR INTERFACE MODULES FOR MAXIMUM FLEXIBILITY
- > ON-BOARD DUAL ETHERNET CONNECTIVITY
- > SUITABLE FOR ENTERPRISES AND SERVICE PROVIDERS
- > 1 UNIT HIGH COMPACT HOUSING
- > COMBINES IP ROUTING, BRIDGING AND VLAN SWITCHING IN ONE DEVICE
- > FULL IP QOS SUPPORT
- > COMPLETE MANAGEMENT SUITE

### LAN INTERFACES

- > Compliant with IEEE 802.3 10Mbps HDX/FDX Ethernet
- > Compliant with IEEE 802.3u 100Mbps HDX/FDX Ethernet
- > 10/100Mbps auto-sense
- > RJ45 Unshielded Twisted Pair (UTP)
- > Number of interfaces: 2

### MODULAR INTERFACE SLOT

- > Number: 1
- > For use in combination with Telindus Interface Modules (TIMs)
  - > Multiple E1 TIM
    - Support for Frame-Relay & MultiLink Frame-Relay (up to 8 ports)
    - Support for PPP & MultiLink PPP (up to 8 ports)
    - Support for ATM & ATM IMA (up to 6 ports)
  - > E3 TIM
    - Support for ATM
  - > STM1 TIM
    - Support for ATM
  - > 4 port Ethernet TIM

### CONTROL INTERFACE

- > Applicable standards: ITU-T V.24, V.28, EIA/TIA 574
- > DCE signals: RXD, TXD, SGND
- > Connector: female DB9

### CLOCKING

- > Slave on STM1, E3 or E1 uplink
- > Internal

### ROUTING AND BRIDGING CHARACTERISTICS

- > Conform TDRE (Telindus Dynamic Routing Engine)

### ROUTING AND BRIDGING PERFORMANCE

- > Routing performance: 150.000 pps
- > Bridging performance: 150.000 pps
- > Supported number of Frame-Relay DLCIs: 200

- > Supported number of ATM PVCs: 200
- > Supported number of PPPoA terminations: 200
- > Supported number of PPPoE terminations: 100
- > Supported number of L2TP tunnels: 10
- > Supported number of VLANs: 200
- > Supported number of bridge-groups: 25

### PROCESSOR AND MEMORY

- > Processor: Motorola 8280
- > Processor speed: 450 MHz
- > Flash memory: 32 Mbyte
- > RAM: 128 MByte

### MAINTENANCE AND MANAGEMENT SUPPORT

- > Conform TDRE (Telindus Dynamic Routing Engine)
- > 2 alarm contact outputs (normally open and closed contacts)
- > 7 alarm input contacts with common return (normally closed contacts)

### FRONT PANEL INDICATORS

- > PWR: Power indication for each power inlet
- > R: Reset condition
- > LAN: LAN status

### MECHANICAL DATA (H X W X D)

- > 44 x 440 x 240mm, Weight: 3.5 kg
- > Rack-mountable (19" or ETSI) through optional rack-mount kit

### POWER REQUIREMENTS

- > Dual power supply AC/DC
- > DC: -36 up to -72V
- > AC: 85 - 264V, 47 - 63 Hz
- > Power consumption: max. 15 W

At the local level it is possible to manage the equipment over a management console interface by means of a PC maintenance tool (TMA), a command line interface or a menu driven interface.

On IP level the equipment supports Telnet, SNMP, HTTP or TFTP/FTP. In this way it is possible to integrate the unit in any existing network management environment.

At the network level it is possible to manage the access network with a stand-alone element manager or with an element manager integrated into HP OpenView.

### SALES CODES

- > 184364 Telindus 1061 Router AC/DC
- > 183021 Rack mount kit (19" or ETSI)

Sales codes and for Telindus Interface Modules (TIMs) can be found in the modular interface section and the sales code quick reference

MORE INFO:  
TELINDUS  
Geldenaaksebaan 335  
B-3001 Heverlee  
Belgium

TEL +32 16 38 20 11  
FAX +32 16 40 01 02  
E-MAIL [productinfo@telindus.com](mailto:productinfo@telindus.com)  
[www.telindusproducts.com](http://www.telindusproducts.com)

**TELINDUS**  
broadband solutions